

# Let's Explore Our

# Environment



**Interesting  
Facts**

**Quiz**



**Connect Dots**

**Word Hunt**



**Maze**

**Colouring**



**Spot  
differences**

**Crossword**



**Hosted by**

Central Pollution Control Board  
MoEF & CC



**Supported by**

Ministry of Environment, Forests and Climate Change  
Government of India



**Conceptualized, Designed & Published by**  
**CPCB ENVIS CENTRE**  
On Control of Pollution Water, Air & Noise

# PREFACE

Environmental safeguard is an integral part of the harmonious development of any country. The awareness for the protection of the environment is to be inculcated in the young minds from the very beginning, so that they can develop a practise of preserving the environment which can later be transformed into habit.

**Green Book** is an effort in the direction of promotion of environmental education. The book has been conceptualized and designed while keeping in view the interests of school going children. The book emphasizes various informative environmental facts, along with other valuable information in the form of quizzes, illustrations, crosswords, puzzles, colouring pages, games, etc. The major aim of the book is to make the children inquisitive about the various phenomena of the environment and to develop in them the ability to explore. It is hoped that the Green Book will help the children in developing new ideas for the protection and conservation of the environment.

**CPCB ENVIS**

**LET'S PLAY & LEARN !!**

# ENVIRONMENTAL QUIZ

What do you call the processing of used materials and their reuse?

- a). Recycling
- b). Reproducing
- c). Reprocessing



The process by which the Earth's temperature is increasing is called.....?

- a). biothermal effect
- b). greenhouse effect
- c). temperature effect



Which of the following is biodegradable?

- a). Plastic
- b). Paper
- c). Glass



what do you call renewable safe sources of energy?

- a). Alternative energies
- b). Bio-energies
- c). Solar energies



Which of these energy sources is renewable?

- a). Coal
- b). Natural Gas
- c). Wind



What do you call a substance that pollutes the air, water or soil?

- a). Pollutant
- b). Pesticides
- c). Acid



What is the most used renewable energy Source in the world?

- a). Hydro energy
- b). Solar energy
- c). Wind energy



What type of shopping bag is more eco-friendly?

- a). Paper
- b). Plastic
- c). Neither



Global warming will cause an increase of .....

- a). Heat waves
- b). Hurricanes
- c). Both



What are some of the consequences of deforestation?

- a). Loss of habitats
- b). Soil erosion
- c). Both



Which of the following is not a fossil fuel?

- a). Wood
- b). Coal
- c). Oil



Which of the following can be recycled?

- a). Milk cartons
- b). Plastic bottles
- c). Both



Which is the following animals is not yet extinct?

- a). Tasmanian tiger
- b). Dodo
- c). Javan rhinoceros



Which layer protects the Earth from UV rays?

- a). Oxygen
- b). Nitrogen
- c). Ozone



What do you call the area that is inhabited by a particular species?

- a). Habitat
- b). Environment
- c). Biosphere



What is the term for the complete disappearance of species?

- a). Termination
- b). Disappearance
- c). Extinction





# ENVIRONMENTAL QUIZ

What do you call the rain that contains many chemicals and is harmful?

- a). Smog
- b). Acid rain
- c). Monsoon



How big is the Ozone Hole?

- a). There is no hole
- b). The size of a car
- c). The size of the U.S.A.



Which of these animals is not in danger becoming extinct?

- a). Panda bears
- b). Polar bears
- c). Grizzly bears



The largest unit of living organisms on earth is ?

- a). Ecosystem
- b). Biome
- c). Biosphere



Which gas is responsible for global warming?

- a). Carbon dioxide
- b). Oxygen
- c). Hydrogen



The green plants are called ?

- a). Producers
- b). Consumers
- c). Decomposers



Which of these human activities contributes the most for global warming?

- a). Using fossil fuels
- b). Cutting down trees
- c). Riding bicycles



Spraying of DDT on crops causes pollution of:

- a). Soil and Water
- b). Air and Soil
- c). Crops and Air



Rainforest land is most often cleared for .....

- a). Factories
- b). Farmland
- c). Pasture



The main source of water pollution is :

- a). Sewage Water
- b). Rain Water
- c). Atmospheric Pollutants



What causes Acid Rain?

- a). The Weather Man
- b). Air Pollution
- c). The Sun



The sound of which intensity is regarded as the safe noise level for a city?

- a). 80 dB
- b). 45 dB
- c). 120 dB



What kinds of gases are damaging the Ozone Layer?

- a). Destructors
- b). CFCs
- c). Farts and burps



State with the highest percentage of forests is:

- a). Arunachal Pradesh
- b). Mizoram
- c). Uttar Pradesh



An increase in Earth's temperature is called what?

- a). Global Fever
- b). Overheating
- c). Global Warming



World Environment Day is observed on:

- a). January 25
- b). June 5
- c). July 1





# INTERESTING FACTS



Trees properly placed around buildings can reduce air conditioning needs by 30%

One tree can absorb as much carbon in a year as a car produces while driving 26,000 miles.



68 percent of plants are in danger of going extinct.



The trails left by airplanes make up almost half of the greenhouse warming caused by the airline industry.

China, The United States and India produce about half of the world's carbon dioxide emissions.

It takes 24 trees to make 1 ton of newspaper.



On average, each person in the UK throws away their own body weight in rubbish every seven weeks.



Go meatless for a week. Vegetables and fruits contain more energy than meat.

Recycling one aluminum can saves enough energy to run a TV for three hours.



Save paper by sending an e-mail instead of a letter.

Did you know Niagara Falls could fill 4,000 bathtubs every second.



Start a compost heap. Composting is nature's way of recycling & a terrific way to learn about the natural life cycle.

Street trees remove 60% of the air pollution.



Reuse scrap paper. Print on two sides, or let your kids color on the back side of used paper.



Save energy and wear-and-tear on your hardware by shutting down your computer at night.

Every year an area of natural forest the size to Greece disappears.

Collect rainwater, and use it to water your houseplants and garden.



The average UK family throws away 6 trees worth of paper in their household bin a year.



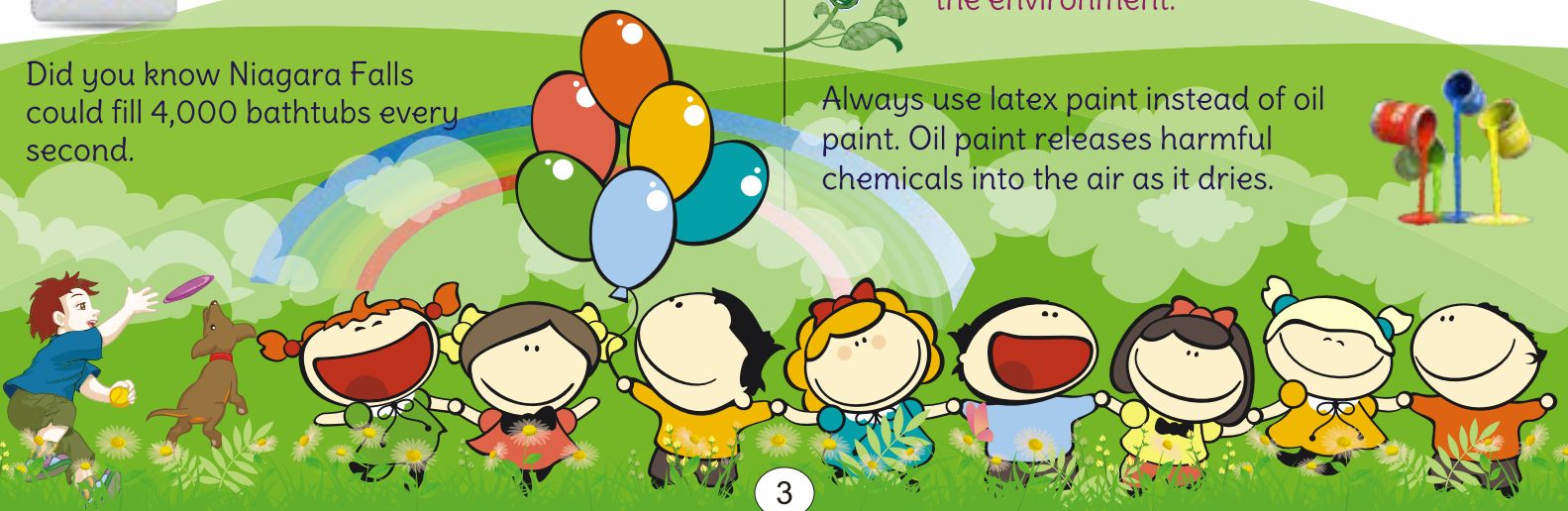
Never purchase items made from endangered animals (like tusks or fur).

The amount of wood and paper we throw away each year is enough to heat 50,000,000 homes for 20 years.



By buying CFL bulbs, you'll save money in the long run, and lighten your impact on the environment.

Always use latex paint instead of oil paint. Oil paint releases harmful chemicals into the air as it dries.



# INTERESTING FACTS

Use rotting leaves in your garden instead of peat moss. It's better to leave the peat in bogs, where it's helping the environment.



Defrost your freezer. A 4 mm coat of ice can double its consumption of electricity.

**Reforestation:** The process of planting trees in forest lands to replace those that have been cut down.



**Biomass :** fuel made from living and dead plant materials such as wood, leaves and the biodegradable waste.

## Renewable energy

Energy from renewable resources such as wind power, solar energy or biomass.



4000 square meters of trees can remove about 13 tons of dust and gases every year from the surrounding environment.



A single mature tree can release enough oxygen back into the atmosphere to support 2 human beings.

Emissions, are gases or particles released into the atmosphere that can contribute to global warming or poor air quality.

The amount of wood and paper we throw away each year is enough to heat 50,000,000 homes for 20 years.



Plastic bags and garbage thrown into the ocean kill as many as 1,000,000 sea creatures every year.



Have a shower instead of a bath. It's better for your circulation and for the planet.

Turn off the tap when brushing your teeth and save 10,000 litres of water a year.



Hand wash your dishes. It saves more than 50 percent of the water used by a dishwasher.



CFC's short for 'chlorofluorocarbons', are widely used chemicals which can damage the ozone layer.



**Biosphere :** The portion of Earth and its atmosphere that can support life.

Recycling aluminum takes 95% less energy than making it from virgin materials!

A modern glass bottle takes 4000 years or more to decompose.



Global warming is caused by human activities that release high levels of carbon dioxide and other gases into the air.

**Deforestation:** The reduction of trees in a wood or forest due to natural forces or human activity such as burning or logging.





# WORD HUNT

Level  
Easy

Total Words  
20

Words type  
Environment

Your goal is to find all the hidden words inside the grid. Hidden words can be in any orientation- up, down, left or right. You will get word puzzles in forward direction, much to spin your head.

|   |   |   |   |   |   |   |   |   |   |   |   |   |   |   |   |   |   |   |   |
|---|---|---|---|---|---|---|---|---|---|---|---|---|---|---|---|---|---|---|---|
| L | H | L | Y | Y | Z | J | Q | O | P | O | X | Y | G | E | N | M | J | O | L |
| K | A | U | O | S | L | U | D | G | E | Q | T | P | O | N | P | H | L | T | U |
| L | B | V | C | O | M | P | O | S | T | F | R | Q | R | F | R | W | I | A | L |
| G | I | M | J | T | N | C | I | I | K | A | J | T | E | A | V | N | T | I | A |
| K | T | K | K | O | N | W | Q | R | K | V | F | S | C | C | Y | G | B | G | Y |
| N | A | P | R | A | R | Q | W | Y | Z | Y | G | T | Y | Z | F | A | Q | A | T |
| O | T | Q | T | P | E | B | A | R | V | M | K | Y | C | M | O | R | H | T | D |
| I | Q | D | E | O | N | A | G | J | Z | Q | Z | Q | L | Y | O | B | U | M | X |
| S | U | I | F | L | E | P | Q | O | G | P | U | N | E | O | D | A | G | O | V |
| E | A | B | E | L | W | W | E | Z | P | R | M | M | B | Z | C | G | C | S | J |
| A | M | E | M | U | A | L | S | O | T | B | V | K | W | L | H | E | D | P | T |
| D | F | G | I | T | B | X | U | N | P | I | J | G | S | D | A | F | C | H | Q |
| C | O | C | S | I | L | P | I | E | A | F | D | U | M | P | I | N | G | E | I |
| Y | O | K | S | O | E | A | C | I | D | R | A | I | N | Q | N | H | G | R | X |
| K | T | R | I | N | B | B | Z | D | N | Y | P | H | X | Q | H | G | V | E | U |
| R | P | U | O | K | W | J | U | M | I | W | S | R | P | B | P | B | R | M | T |
| Q | R | A | N | Z | M | B | A | T | E | M | P | E | R | A | T | U | R | E | L |
| J | I | T | R | X | Y | K | X | F | I | G | H | U | G | N | S | M | O | G | B |
| E | N | V | I | R | O | N | M | E | N | T | O | S | S | E | C | Y | F | P | D |
| A | T | O | G | E | M | O | C | X | Z | R | E | E | Y | Q | V | Z | J | O | Y |





# WORD HUNT

Level  
Medium

Total Words  
20

Words type  
Environment

Your goal is to find all the hidden words inside the grid. Hidden words can be in any orientation- up, down, left or right. You will get word puzzles in forward direction, much to spin your head.

|   |   |   |   |   |   |   |   |   |   |   |   |   |   |   |   |   |   |   |   |
|---|---|---|---|---|---|---|---|---|---|---|---|---|---|---|---|---|---|---|---|
| L | Q | L | X | R | Y | C | O | N | T | A | M | I | N | A | T | I | O | N | K |
| F | C | E | N | D | A | N | G | E | R | E | D | Y | B | A | S | X | W | L | W |
| H | Y | D | R | O | C | A | R | B | O | N | Q | T | I | N | V | G | U | M | J |
| C | F | X | J | X | J | P | W | Z | O | P | Y | R | O | L | Y | S | I | S | B |
| O | F | P | V | B | J | P | N | A | S | D | Q | T | R | T | T | I | J | L | X |
| R | M | E | A | I | T | R | O | P | O | S | P | H | E | R | E | L | Q | M | O |
| A | M | C | P | O | K | D | J | V | L | K | L | I | M | D | Y | A | T | N | O |
| L | P | O | R | D | T | D | C | Y | B | U | Q | J | E | U | X | L | N | U | P |
| S | V | F | I | I | K | E | Q | L | Z | O | B | T | D | S | X | N | X | C | C |
| C | E | O | R | V | S | C | G | T | U | Y | K | M | I | T | J | B | V | O | Y |
| M | W | S | P | E | J | I | N | C | I | N | E | R | A | T | I | O | N | N | Y |
| V | I | S | B | R | E | B | R | Y | K | E | J | G | T | K | F | E | B | S | J |
| S | L | I | R | S | X | E | D | I | L | V | L | B | I | A | B | X | W | E | F |
| B | D | L | S | I | K | L | O | I | V | F | N | Y | O | N | S | C | D | R | V |
| Y | L | O | I | T | L | I | K | R | Z | Y | S | O | N | E | F | B | G | V | V |
| J | I | M | L | Y | P | A | R | T | I | C | U | L | A | T | E | I | D | A | W |
| D | F | P | U | H | D | E | F | O | R | E | S | T | A | T | I | O | N | T | X |
| E | E | B | I | O | S | P | H | E | R | E | M | W | K | O | K | M | P | I | B |
| J | M | T | C | C | A | R | B | O | N | D | I | O | X | I | D | E | Y | O | J |
| Z | A | E | F | F | L | U | E | N | T | W | P | Q | Y | O | B | F | L | N | H |

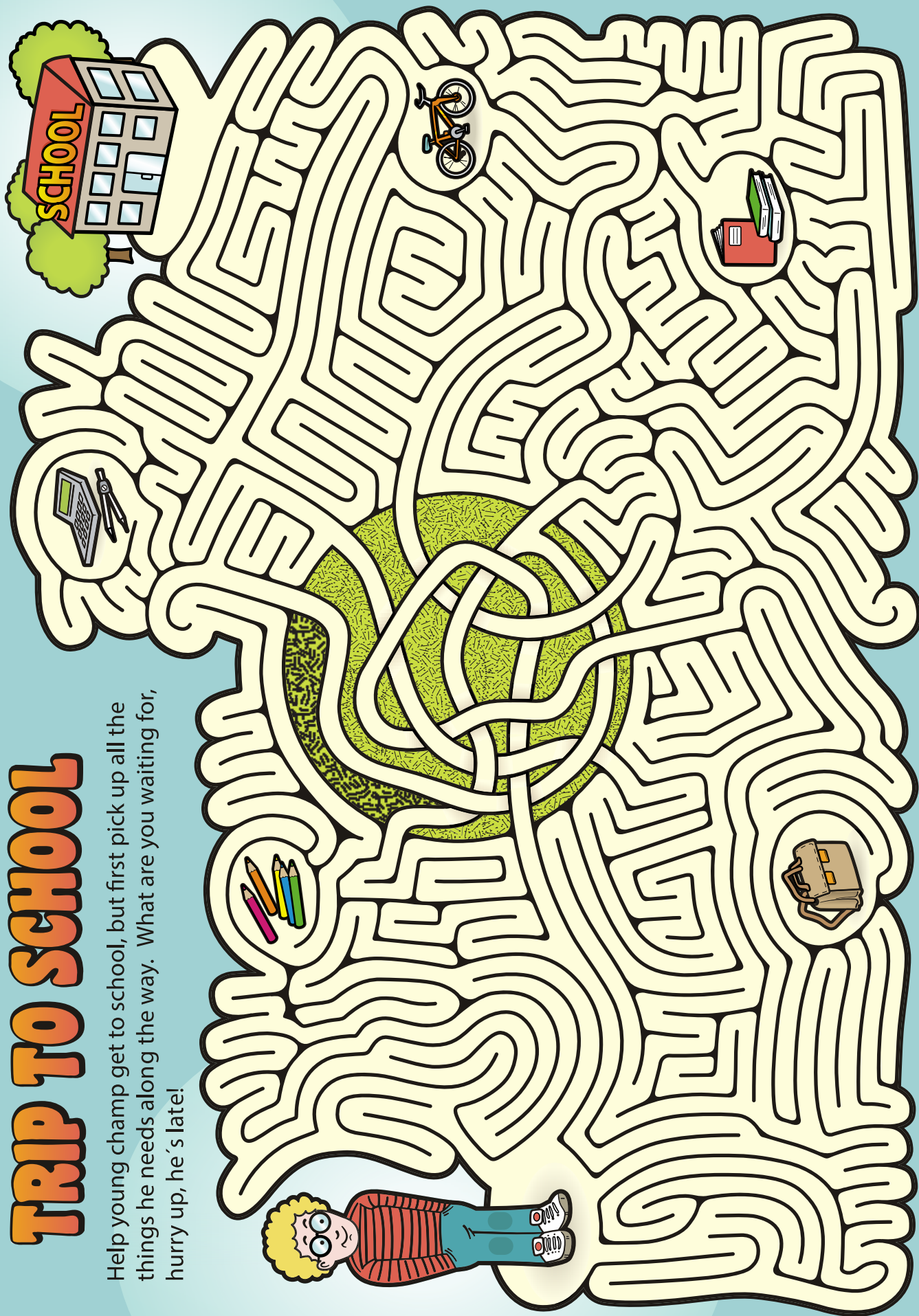
# MAZE

Squirrel is trying to  
pick up all the nuts!  
Help to collect nuts  
and store them in  
the tree.



# TRIP TO SCHOOL

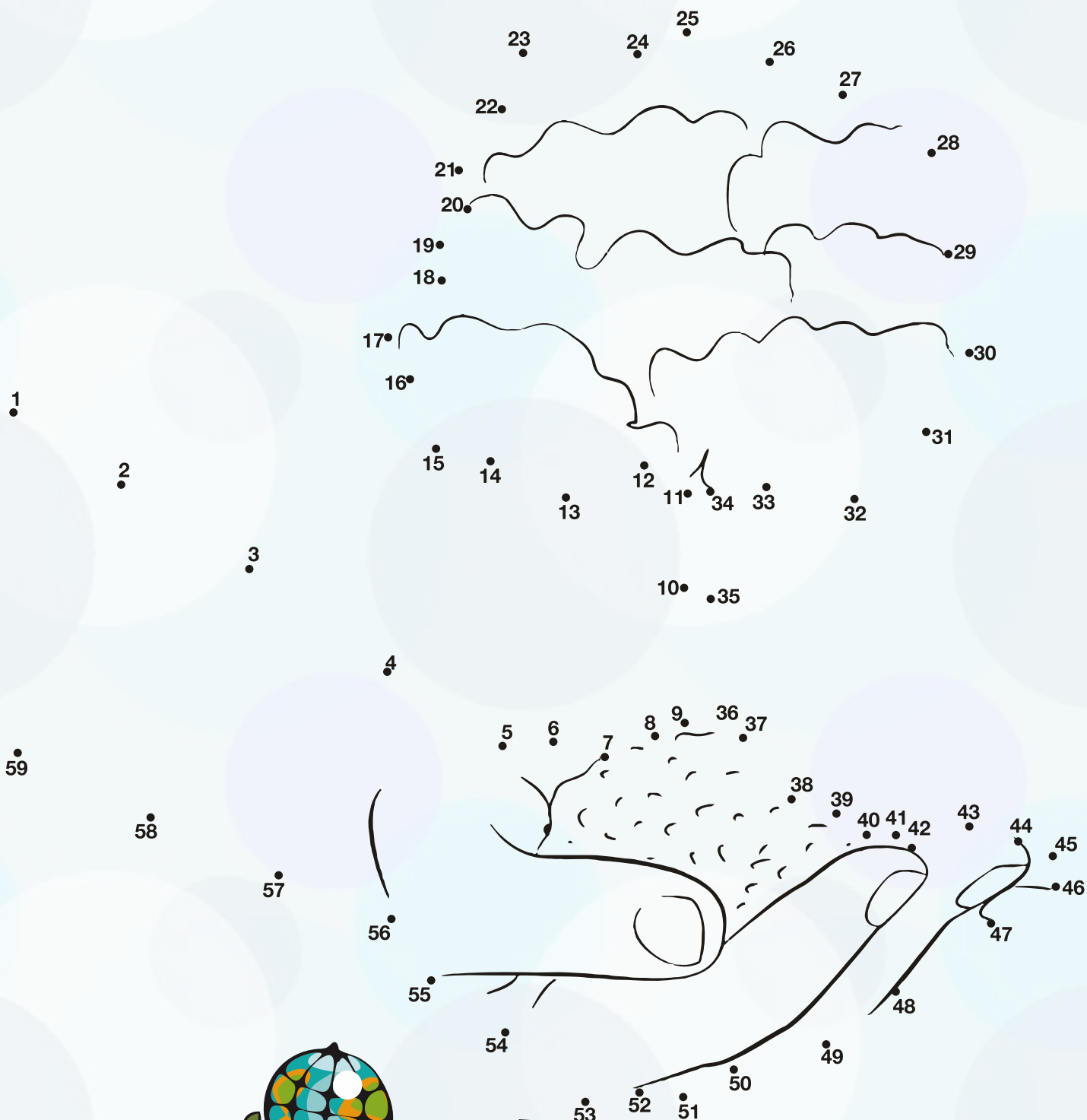
Help young champ get to school, but first pick up all the things he needs along the way. What are you waiting for, hurry up, he's late!





# CONNECT DOTS

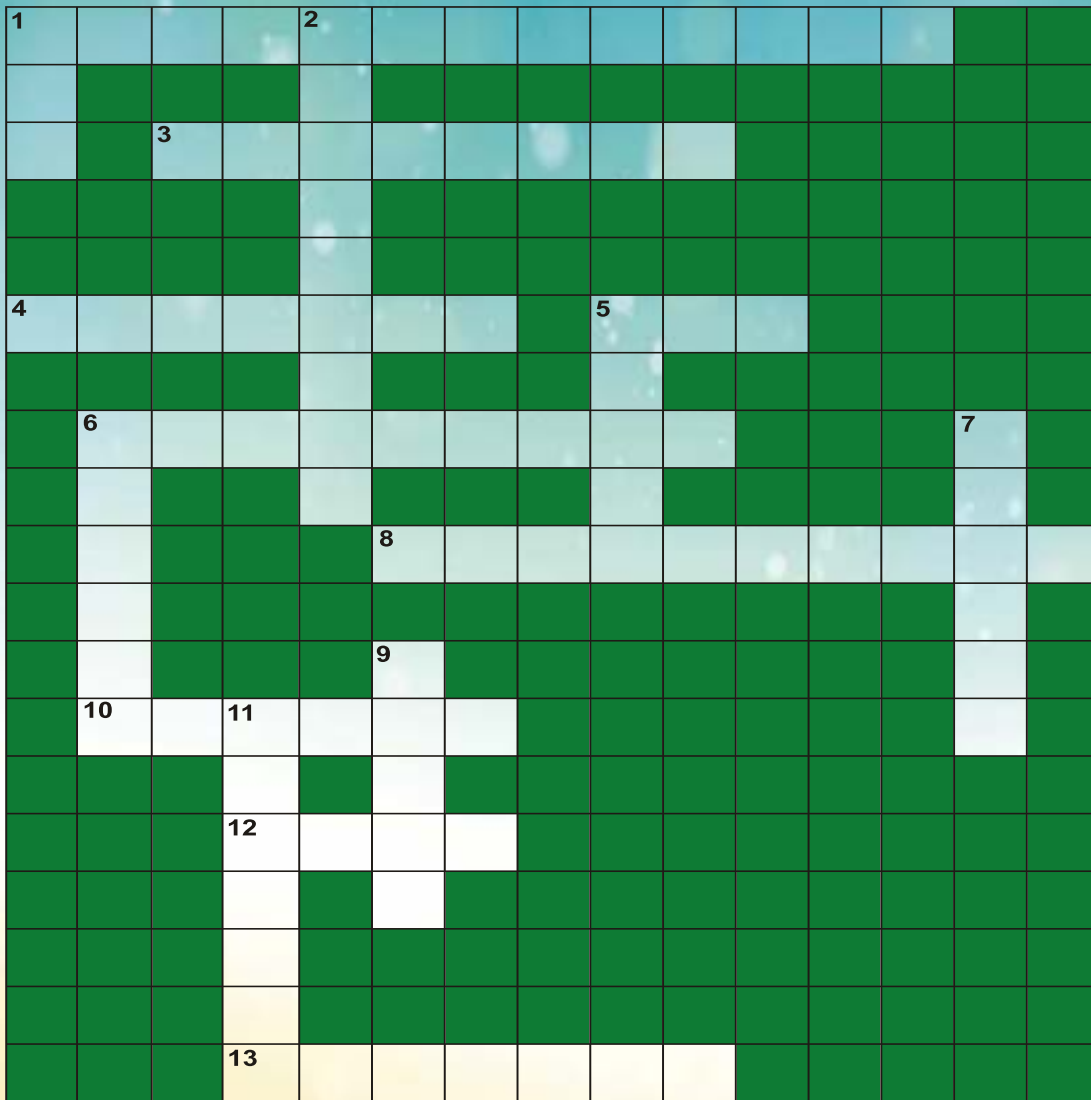




# CROSS WORD



**Instructions:** Fill in the puzzle using the sentences below. Try to figure out the word that goes in the blank or the word that the sentence is describing. Then see if the letters fit in the specific numbered block in the puzzle.



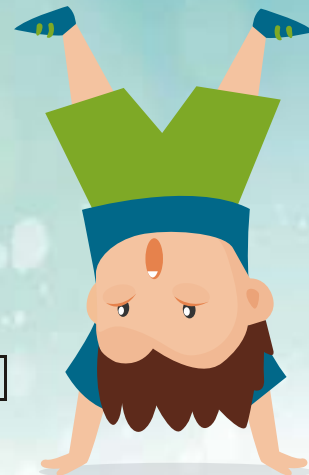
## Across

1. The process of cutting down or burning a forest.
3. In order to harness wind energy, you need to build a.
4. The average weather patterns of a region.
5. Black liquid. Drawn from wells. Can be refined and turned into gasoline.
6. The release of harmful substances into the air or water is called.
8. \_\_\_\_\_ gases such as methane contribute to global warming.
10. \_\_\_\_\_ dioxide is a gas often created by combustion. It contributes to global warming.
12. Black mineral. Dug from mines. Pollutes the air when burned.
13. Type of fuel. Refined from corn. Popular in the United States.

## Down

1. Manmade structure. Blocks a river. Used to harness hydroelectric power.
2. A resource is one that can be used more than once.
5. The layer of the atmosphere protects us from the sun's most harmful rays.
6. One way to help the environment is to ride transportation, such as buses or trains, instead of driving your own car.
7. This land is very dry. Almost no plants or animals live here. The sun dictates the weather: Hot during the day. Cold during the night. This land results when topsoil and plants are lost due to drought or overuse by humans.
9. Which Energy comes from the sun.
11. Don't throw that soda can away! You can \_\_\_\_\_ it.





## Across

3. \_\_\_\_\_ panels are often placed on rooftops in order to save energy by using energy from a renewable source, the sun.
5. This is an environmentally friendly fuel that is made from biomass, such as animal fats, vegetable oils, and even algae
8. You should try and \_\_\_\_\_ to school instead of driving in order to reduce air pollution.
10. You should save \_\_\_\_\_ by turning off your faucet while you brush your teeth.
11. Always turn off the \_\_\_\_\_ after you are done using a room.
13. This is used on farms and lawns to make plants grow faster, but pollutes the water in streams, ponds, rivers, and lakes.
14. This is a short way to say chlorofluorocarbons. Chlorofluorocarbons are harmful air pollutants that damage the ozone layer.
16. Go \_\_\_\_\_!
17. Runoff from a nearby \_\_\_\_\_ can cause a stream to become polluted with animal waste and fertilizer.
18. Everybody including \_\_\_\_\_ can make a difference and keep our Earth clean!
19. Reduce, Reuse, \_\_\_\_\_

## Down

1. One of the main fossil fuels is natural \_\_\_\_\_.
2. This is a greenhouse gas that is causing global warming.
4. A fossil fuel that is burned to produce energy. (Also called petroleum)
6. This element is released by plants and it is what we breathe.
7. An \_\_\_\_\_ is a community of plants and animals interacting together with the physical environment around them.
9. Driving a \_\_\_\_\_ is bad for the environment because it releases harmful pollutants into the air.
12. This is a greenhouse gas that is not good because too much of it is creating a hole in the ozone layer, which protects us from UV rays.
15. To save water you should take a short \_\_\_\_\_.
20. A soda \_\_\_\_\_ should always be thrown away in a recycling bin.



# SPOT THE DIFFERENCE

1

Can you spot 8 differences between the two pictures? Find them and circle them as quickly as you can.



# SPOT THE DIFFERENCE

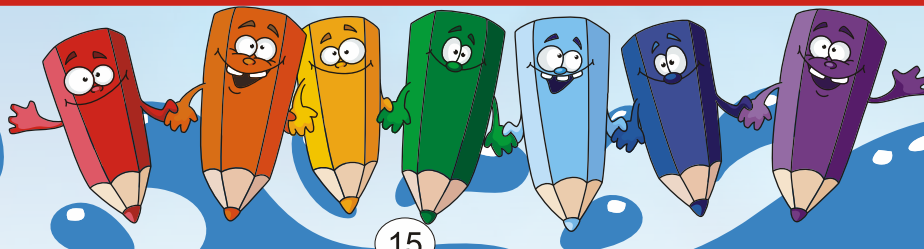
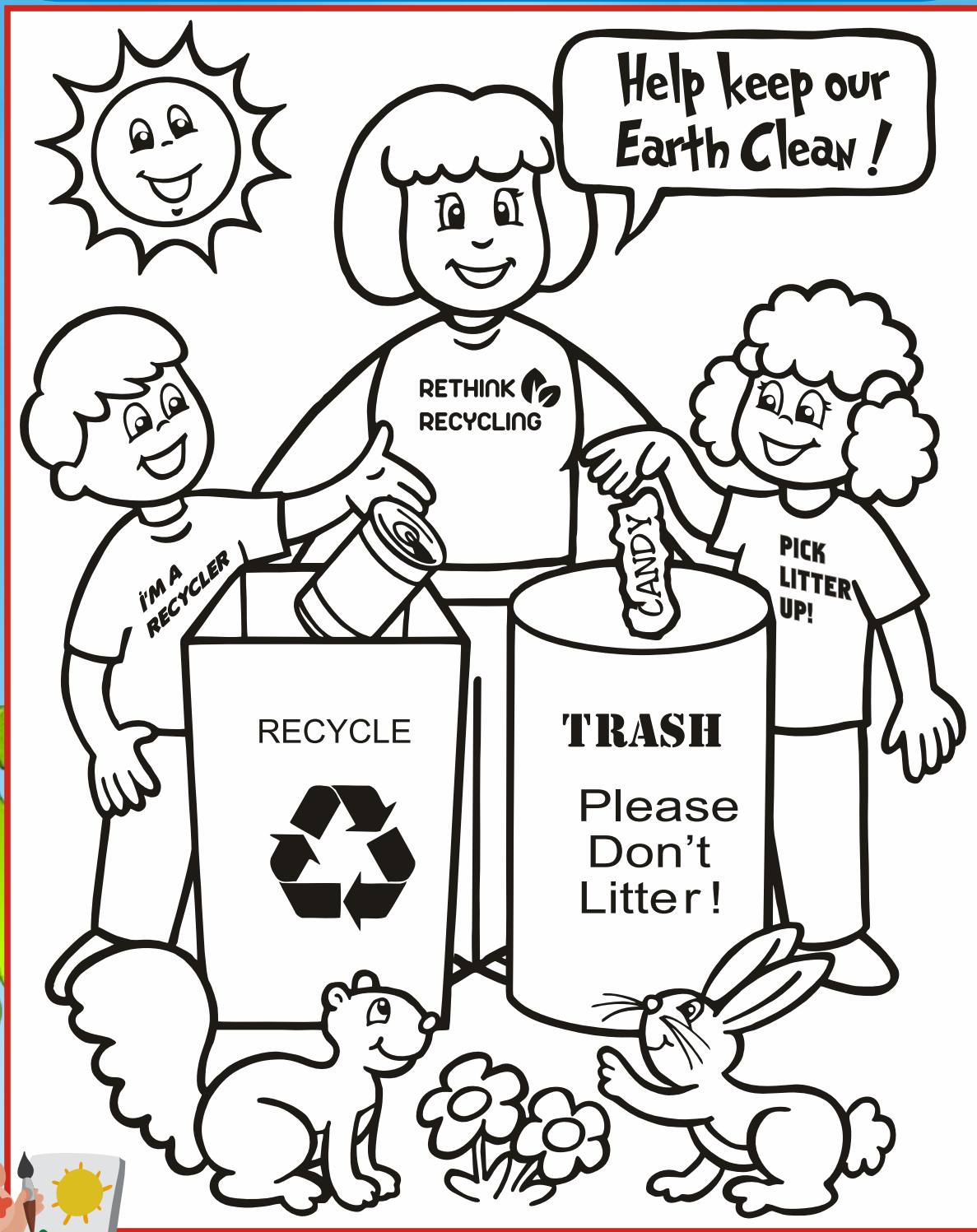
2

Can you spot 10 differences between the two pictures ?





# LET'S COLOUR





# Answers

## ENVIRONMENTAL QUIZ

- |      |       |       |       |
|------|-------|-------|-------|
| 1. A | 9. B  | 17. B | 25. C |
| 2. B | 10. A | 18. C | 26. A |
| 3. C | 11. A | 19. A | 27. A |
| 4. A | 12. A | 20. B | 28. A |
| 5. C | 13. C | 21. B | 29. A |
| 6. A | 14. A | 22. B | 30. A |
| 7. A | 15. C | 23. B | 31. B |
| 8. A | 16. C | 24. C | 32. B |

## WORD HUNT

### Word Hunt Easy

SMOG  
SLUDGE  
DUMPING  
NOISE  
HABITAT  
REUSE  
ACIDRAIN  
TEMPERATURE  
RENEWABLE  
ENVIRONMENT

FOODCHAIN  
EMISSION  
POLLUTION  
GARBAGE  
OXYGEN  
ATMOSPHERE  
OZONE  
RECYCLE  
COMPOST  
FOOTPRINT

### Word Hunt Medium

FOSSIL  
WILDLIFE  
BIOSPHERE  
ENDANGERED  
DUST  
EFFLUENT  
CARBONDIOXIDE  
DEFORESTATION  
CONSERVATION  
BIOME

INCINERATION  
BIODIVERSITY  
CORALS  
BIOREMEDIATION  
CONTAMINATION  
HYDROCARBON  
TROPOSPHERE  
PARTICULATE  
DECIBEL  
PYROLYSIS

## CROSS WORD

### Cross Word 1

#### Across

1. Deforestation
3. Wind farm
4. Monsoon
5. Tar
6. Pollution
8. Greenhouse
10. Carbon
12. Coal
13. Ethanol

#### Down

1. Dam
2. Renewable
5. Ozone
6. Public
7. Desert
9. Solar
11. Recycle

### Cross Word 2

#### Across

3. Solar
5. Biofuel
8. Bike
10. Water
11. Switch
13. Fertilizer
14. CFC
16. Green
17. Farm
18. Man
19. Recycle

#### Down

1. Gas
2. Carbondioxide
4. Oil
6. Oxygen
7. Ecosystem
9. Car
12. Methane
15. Shower
20. Can

## SPOT THE DIFFERENCE

### Spot the difference 1

- |                              |                  |
|------------------------------|------------------|
| 1. Colour of Bag             | 5. Bush          |
| 2. Gloves Colour             | 6. Shoe colour   |
| 3. Colour of one of the file | 7. Frog          |
| 4. Girl cloth's colour       | 8. Teeth of girl |

### Spot the difference 2

- |                   |                 |
|-------------------|-----------------|
| 1. Cloud          | 6. Bird         |
| 2. Recycle symbol | 7. Cap colour   |
| 3. Crow           | 8. Girl's shoes |
| 4. Dog strap      | 9. Yellow book  |
| 5. Bush           | 10. Stairs      |



# Environmental Calendar

|                                |              |
|--------------------------------|--------------|
| World Wetland Day              | 2 February   |
| National Science Day           | 28 February  |
| World Forestry Day             | 21 March     |
| World Water Day                | 22 March     |
| World Meteorological Day       | 23 March     |
| World Health Day               | 7 April      |
| World Heritage Day             | 18 April     |
| Earth Day                      | 22 April     |
| Anti Tobacco Day               | 31 May       |
| World Environment Day          | 5 June       |
| World Population Day           | 11 July      |
| World Ozone Day                | 16 September |
| Green Consumer Day             | 28 September |
| World Habitat Day              | 3 October    |
| World Animal Welfare Day       | 4 October    |
| Natural Disaster Reduction Day | 13 October   |
| Children's Day in India        | 14 November  |
| Bhopal Tragedy Day             | 2 December   |

Conceptualized, Designed and Published  
by CPCB ENVIS Team :

Sh. G. Ganesh, Sc. 'D' & Co-ordinator  
Dr. Surya Singh, Programme Officer  
Ms. Hemlata, Sr. Information Officer  
Sh. Prem Raj, Sr. IT Assistant

## CPCB ENVIS CENTRE

‘PARIVESH BHAWAN’ East Arjun Nagar,  
Shahdara, Delhi - 110032

Website: [www.cpcbenvnis.nic.in](http://www.cpcbenvnis.nic.in), email : [cpcb@envnis.nic.in](mailto:cpcb@envnis.nic.in)